

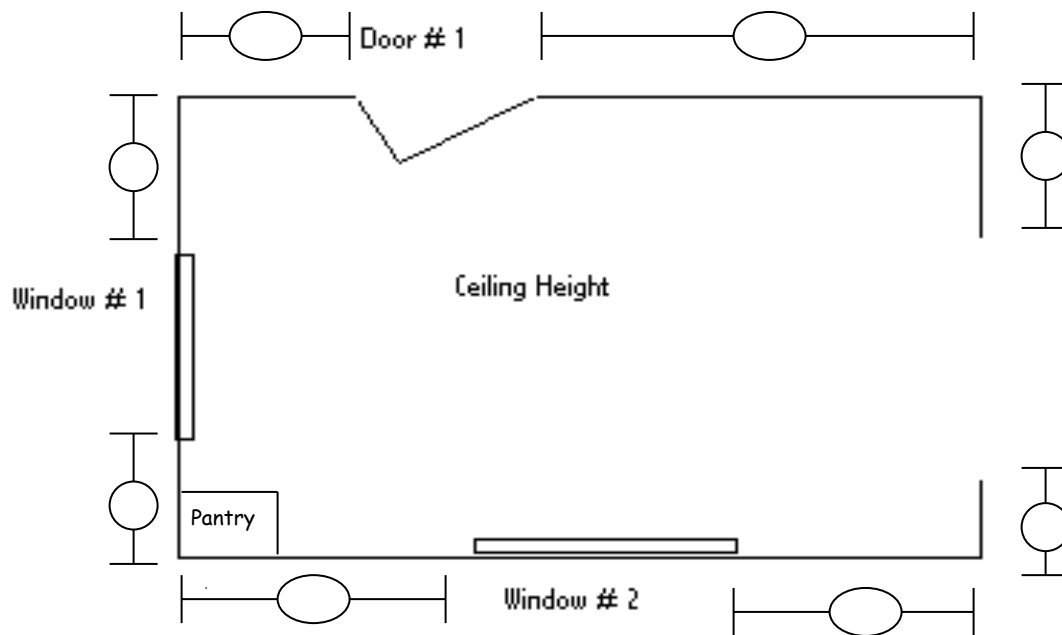


Measuring Instructions

Please use this guide for measuring the existing Kitchen or Bath that you wish to remodel. Also included is a grid sheet for your sketch. Please use a consistent unit of measure throughout the drawing for our design purposes.

Step 1

Draw a rough sketch of the room as seen below.



Step 2

Begin at a corner in the room, measure to the first window, door, or wall. Continue clockwise around the room until each wall, window, and door has been measured and you have ended where you started. Remember, when measuring doors and windows please include the trim as part of these objects. If you would like to check your dimensions, measure each wall separately, add them up, and match it to your original number.

Step 3

Fill in the measurements in their corresponding circle.

Step 4

Measure the ceiling height and include in center of drawing. The height may vary somewhat, so measure at more than one point for consistency.

Step 5

Measure the height of the window and the distance from the bottom of the window trim to the floor. Include data here

Window 1

Height: _____

Distance from Floor: _____

Window 2

Height: _____

Distance from Floor: _____

Window 3

Height: _____

Distance from Floor: _____

Step 6

Note and draw in any obstructions such as radiators, pipes, sink plumbing. Measure distance from first closest wall to obstruction, and then from the second closest wall to obstruction. If at all possible, measure the height/width of object.

Obstruction Type _____	Obstruction Type _____
From 1 st Wall _____	From 1 st Wall _____
From 2 nd Wall _____	From 2 nd Wall _____
Height _____	Height _____
Width _____	Width _____

Step 7

Note and draw in any appliances that you wish to keep such as stove, refrigerator, microwave, etc. Please measure the height and width of each object.

Object 1 _____	Object 2 _____	Object 3 _____
Height _____	Height _____	Height _____
Width _____	Width _____	Width _____
Depth _____	Depth _____	Depth _____

Step 8

Note any Soffits above your cabinets.

Height _____
Depth _____

Step 9

Indicate any heat vents and their location on the room drawing.